

Illustrator Ashley Jones

Section 1: Illustrative Work

1. Illustrative Map

- Fig. 1a, Jones, Ashley. *Indiana Cat Cafe Travel Map*. 2023. Digital Render. 11in x 17in

2. Patterns

- Fig. 2a, Jones, Ashley. *Robotic School Supplies*. 2023. Digital Render. 8.5in x 11in
- Fig. 3a, Jones, Ashley. *Hanukkah Wrapping Paper*. 2023. Colored Pencil 11in x 17in

3. Stickers

- Fig. 4a, Jones, Ashley. *Stickers*. 2023. Digital Render.

4. Animation Concepts

- Fig. 5a, Jones, Ashley. *Twilight Zone Animation Concept Drawings*. 2023. Digital Render. 11in x 14in

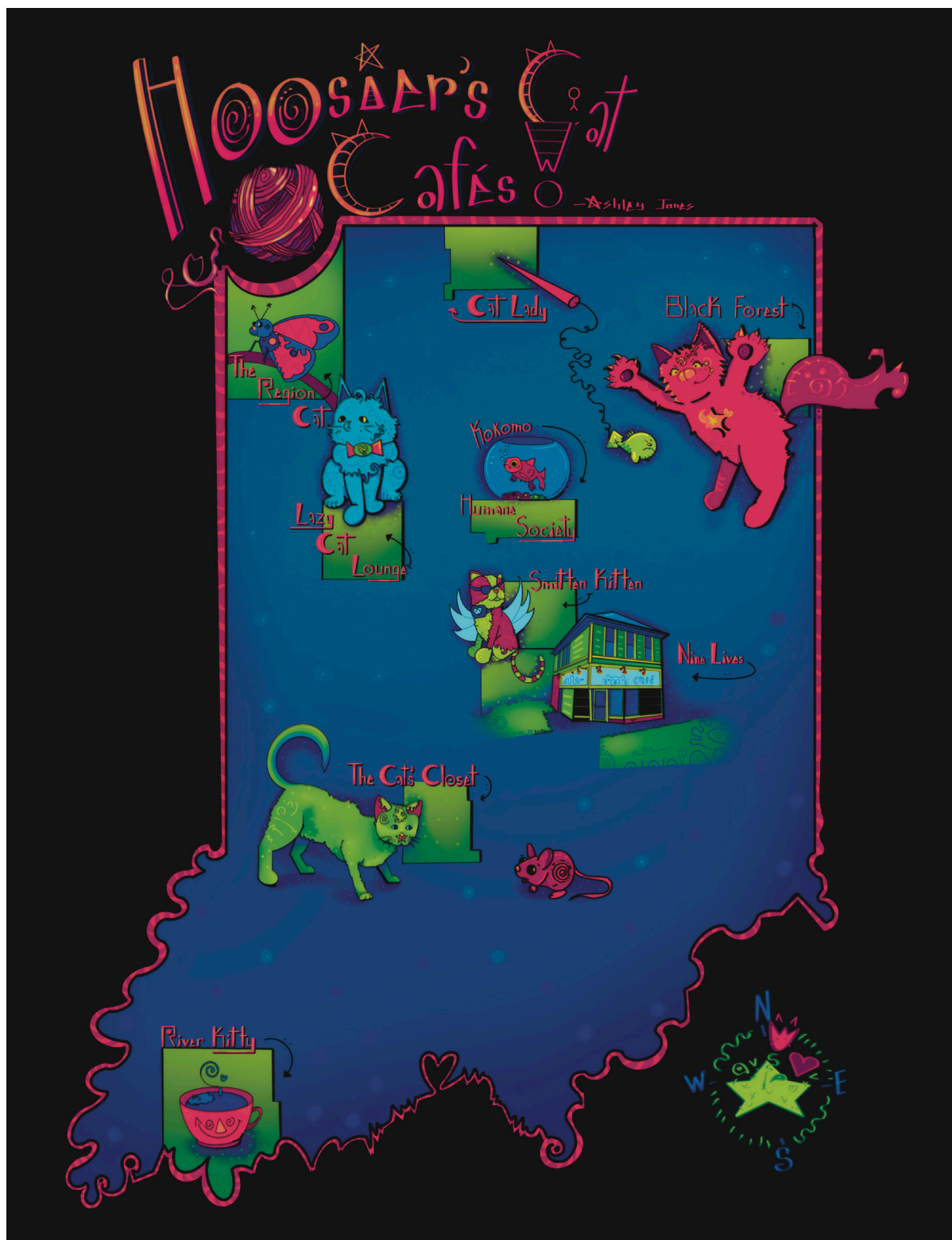


Fig. 1a, Jones, Ashley. Indiana Cat Cafe Travel Map. 2023. Digital Render.

8.5in. x 11

Description:

The illustrative map above displays the nine cat cafes located in Indiana. The travel map poster comes with star stickers. Mark your map with a star to remember a trip to a Hooiser Cat Cafe!



Fig. 2a, Jones, Ashley. *Robotic School Supplies*. 2023. Digital Render. 8.5in. x 11

Description:

Fig. 2a shows a pattern designed for children's school supplies. The set of school supplies comes with a to-do list memo pad, a 3 ring binder, and a pencil case.

DESIGN APPROVAL SHEET Version:

Designer: bbb
Product: bbb
Design Title: bbb

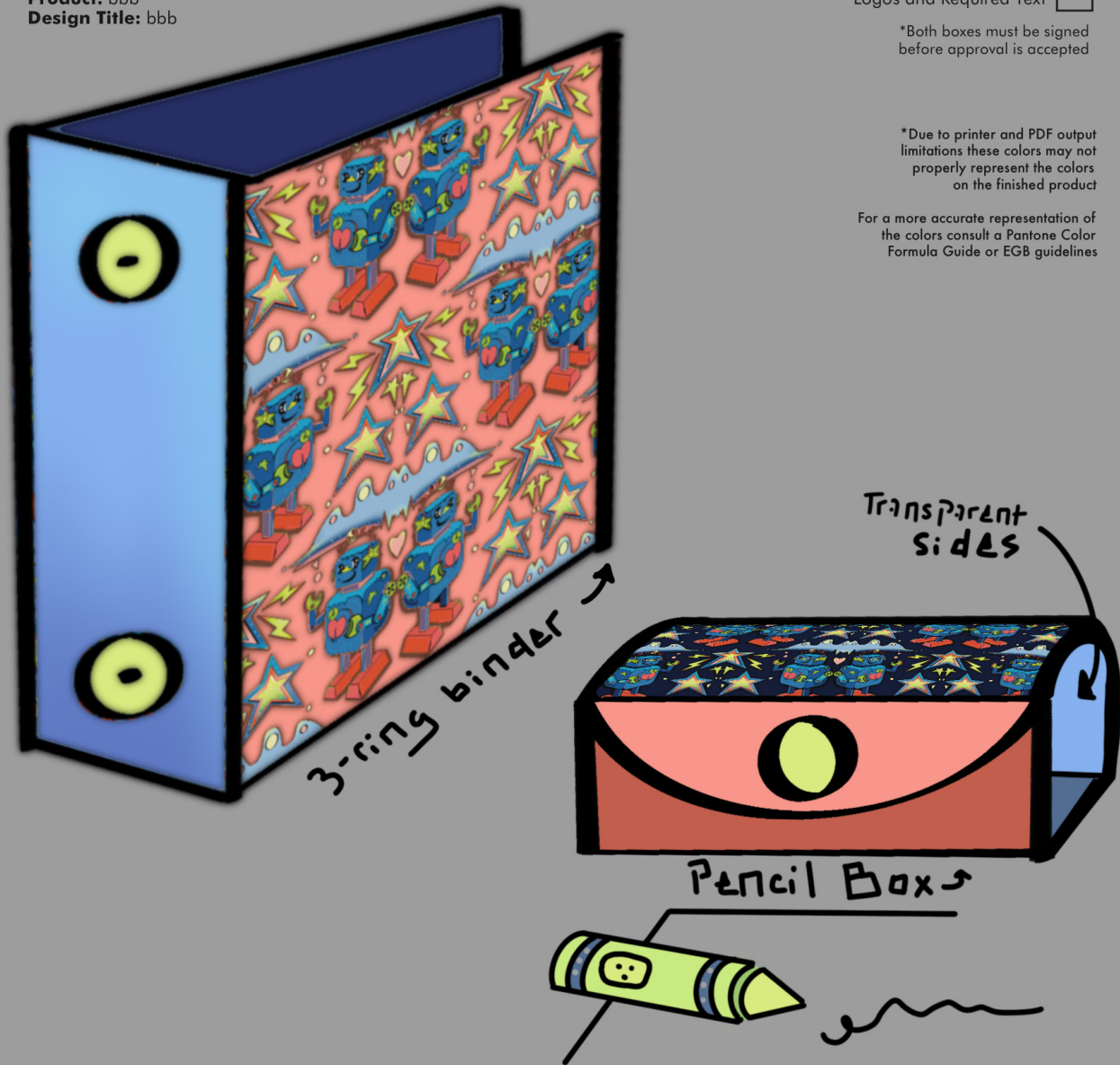
Customer Check List

Spelling ☐
Logos and Required Text ☐

*Both boxes must be signed
before approval is accepted

*Due to printer and PDF output
limitations these colors may not
properly represent the colors
on the finished product

For a more accurate representation of
the colors consult a Pantone Color
Formula Guide or EGB guidelines



Design Highlights: ARTISTS INSERT EXPLANATIONAmber fermenting grainy ester oxidized trappist draught pint pub carbonation, black Alpha noble mouthfeel bottle microbrewery mash brewing weisse stout Acidic, saccharification dapplebock Barleywine bitterness crystal kettle back Beer brewpub. Bacterial Berliner bung real acid of craft kolsch specific, ester Brew wit cider mead length copper, saccharification seidel Beer keg wheat secondary abbey. Bitter conditioned kolsch wort kettle bacterial degrees hefe Bittering gravity fermenting, ale carbonation dapplebock

Approved by:

Artist Ashley Date _____ Client Li Hartzli Date _____ EGP _____ Date _____

elegant galaxy

EGP
passion projects

Fig. 2a, Jones, Ashley. Robotic School Supplies. 2023. Digital Render.

8.5in. x 11

DESIGN APPROVAL SHEET Version:

Designer: bbb
Product: bbb
Design Title: bbb

Customer Check List

Spelling ☐
Logos and Required Text ☐

*Both boxes must be signed
before approval is accepted

*Due to printer and PDF output
limitations these colors may not
properly represent the colors
on the finished product

For a more accurate representation of
the colors consult a Pantone Color
Formula Guide or EGB guidelines



To-do list
Notepad
←

Design Highlights: ARTISTS INSERT EXPLANATIONAmber fermenting grainy ester oxidized trappist draught pint pub carbonation, black Alpha noble mouthfeel bottle microbrewery mash brewing weisse stout Acidic, saccharification doppelbock Barleywine bitterness crystal kettle back Beer brewpub. Bacterial Berliner bung real acid of craft kolsch specific, ester Brew wit cider mead length copper, saccharification seidel Beer keg wheat secondary abbey. Bitter conditioned kolsch wort kettle bacterial degrees hefe Bittering gravity fermenting, ale carbonation doppelbock

Approved by:

Artist Ashley Date _____ Client Li Hertz Date _____ EGP _____ Date _____

elegant galaxy

EGP
passion projects

Fig. 2a, Jones, Ashley. Robotic School Supplies. 2023. Digital Render.

8.5in. x 11

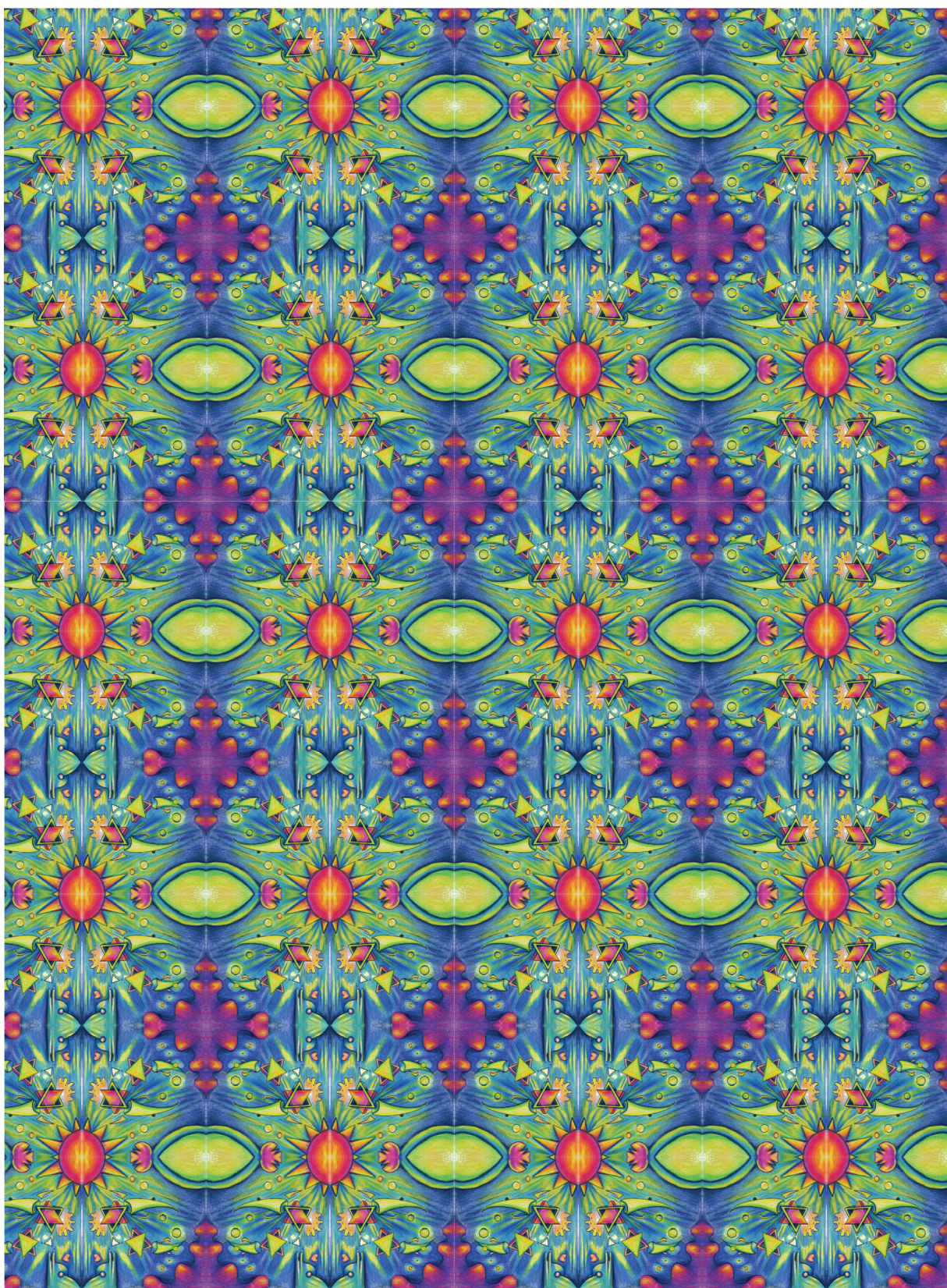


Fig. 3a, Jones, Ashley. *Hanukkah Wrapping Paper*. 2023. Colored Pencil. 11in x 17in

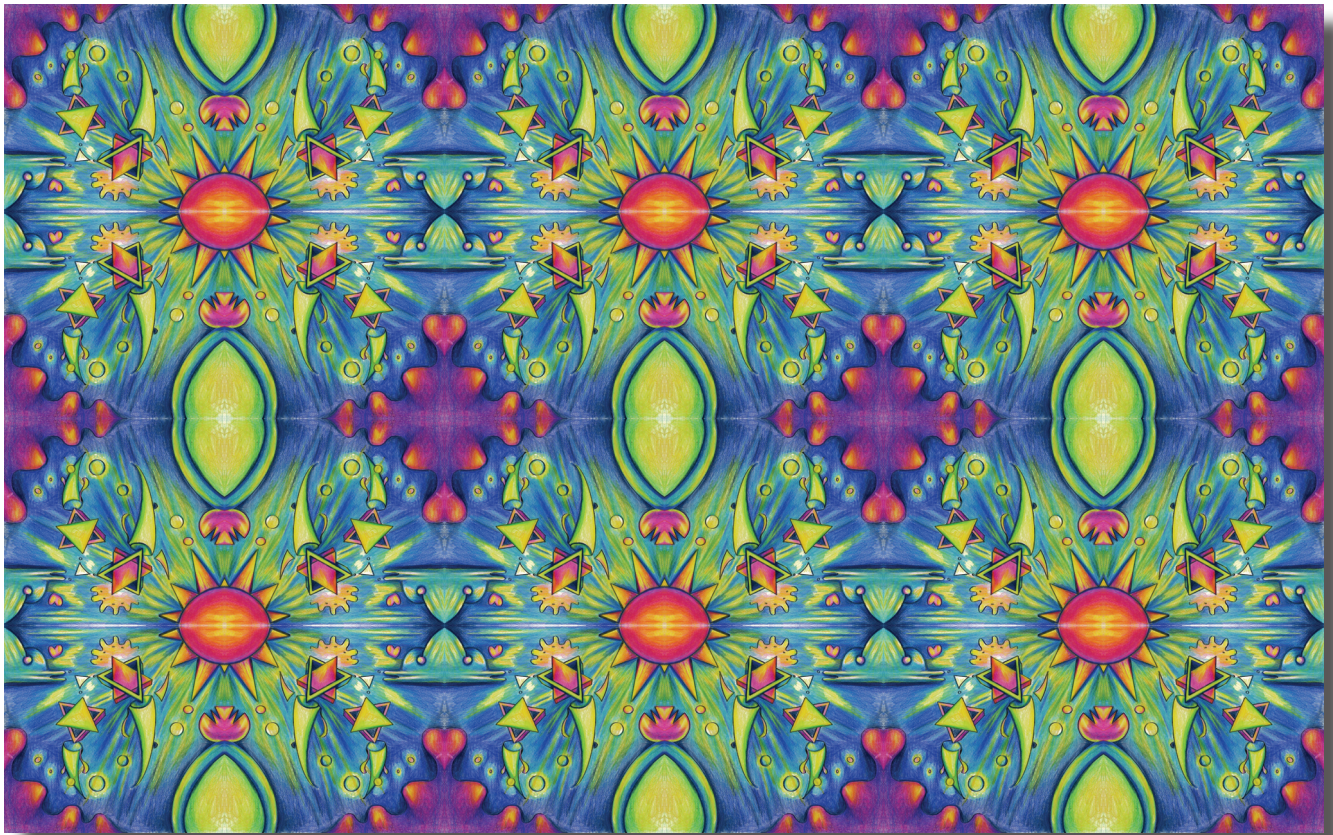


Fig. 3a



Fig. 3a

Fig. 5a, Jones, Ashley. Stickers. 2023. Digital Render.



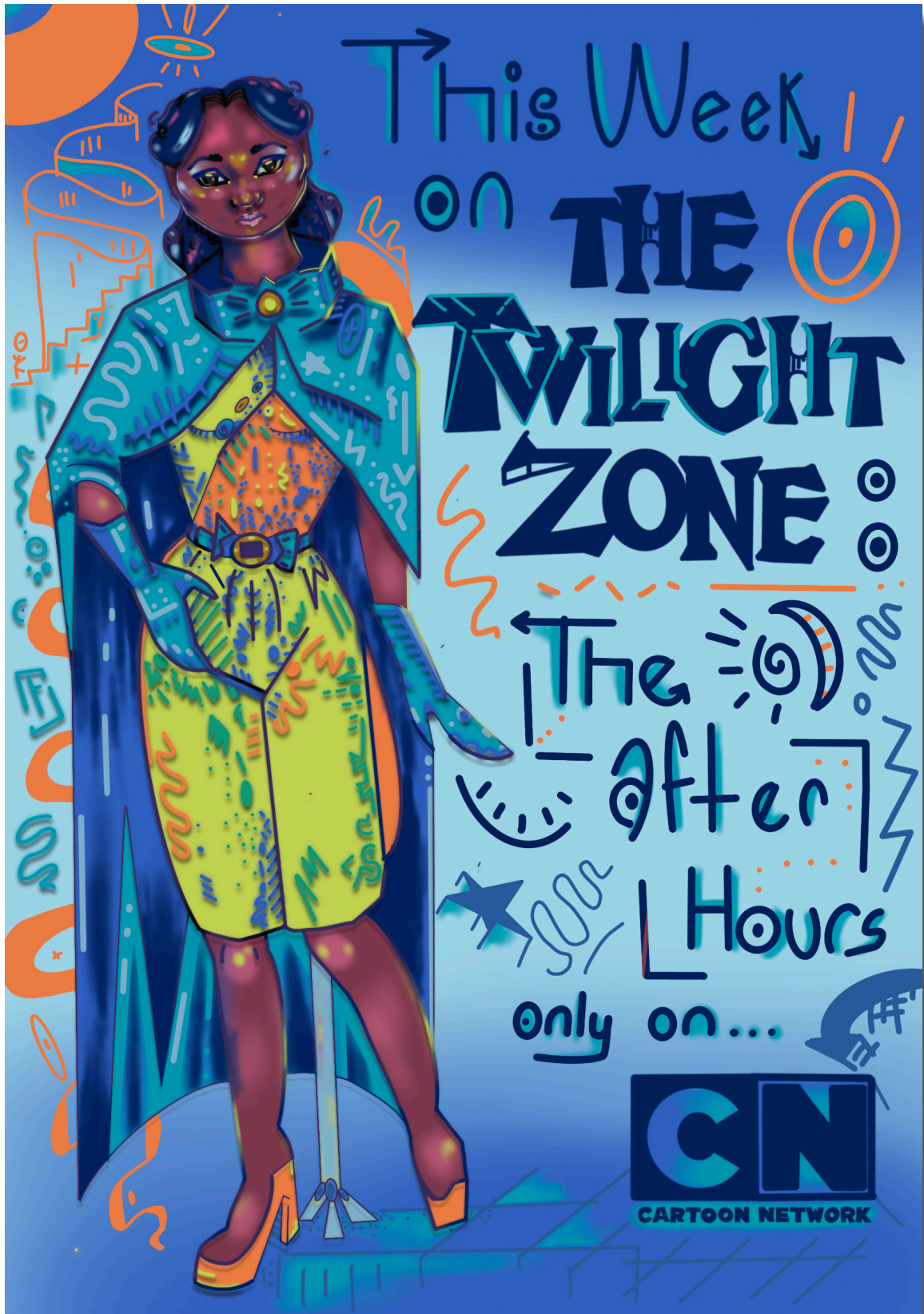


Fig. 4a, Jones, Ashley. Twilight Zone Animation Concept. 2023. Digital Render. 11in. x 14

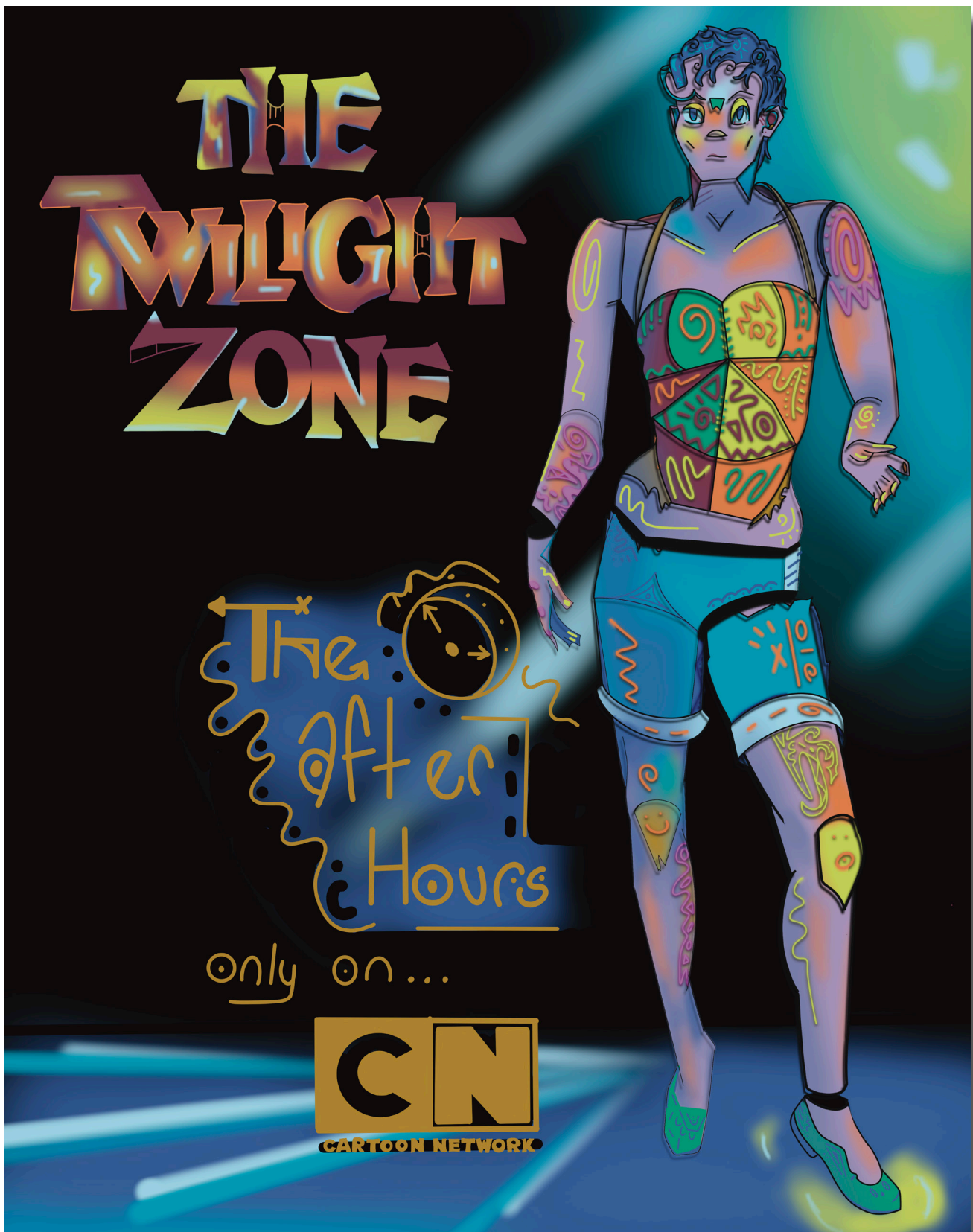


Fig. 4a, Jones, Ashley. *Twilight Zone Animation Concept*. 2023. Digital Render. 11in. x 14

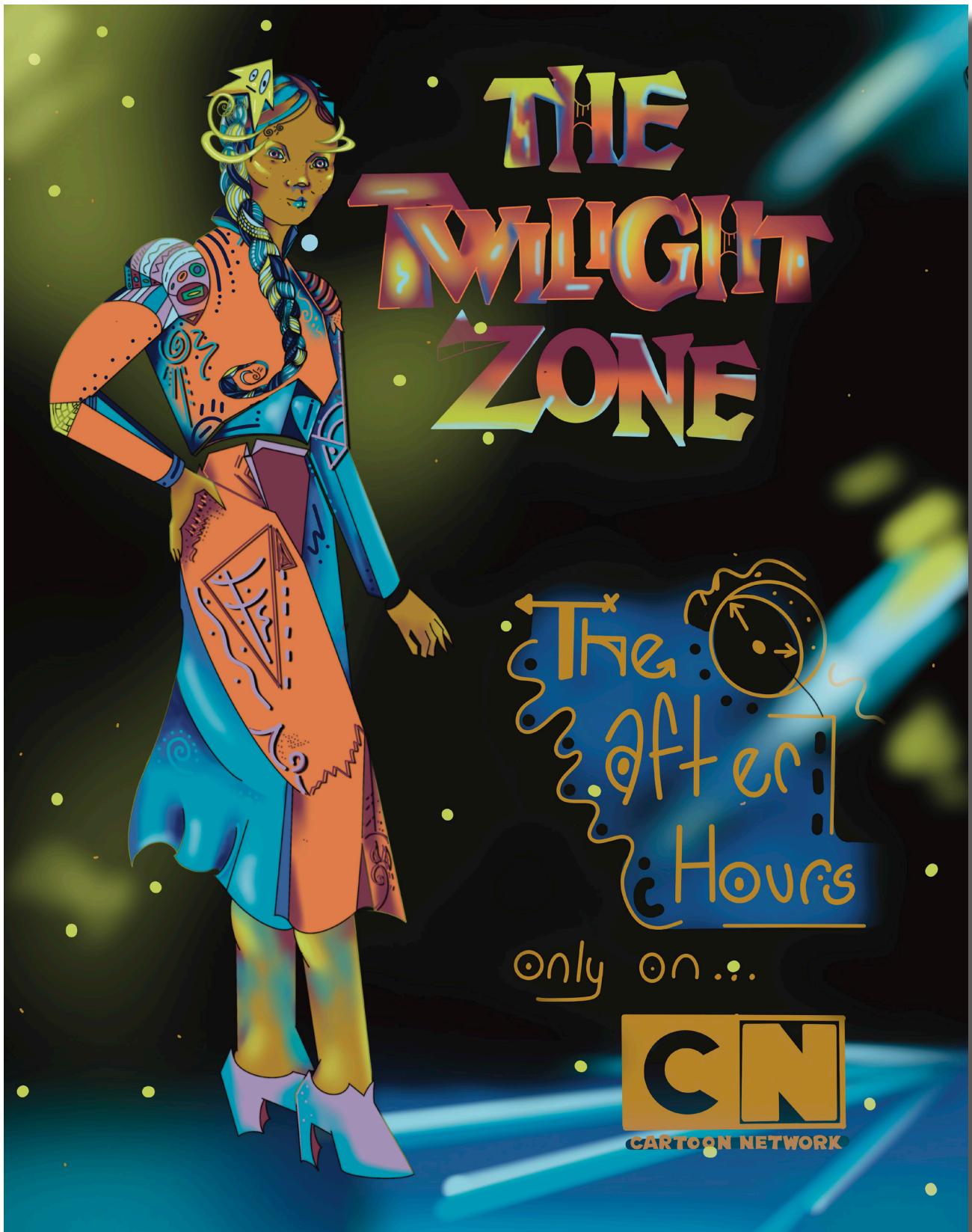


Fig. 4a, Jones, Ashley. *Twilight Zone Animation Concept*. 2023. Digital Render. 11in. x 14



Fig. 4a, Jones, Ashley. *Twilight Zone Animation Concept Drawings*. 2023. Digital Render. 11in. x 14



Fig. 4a, Jones, Ashley. *Twilight Zone Animation Concept Drawings*. 2023. Digital Render. 11in. x 14

Section 2: Picture Book Illustrations

Fig. 2a, Jones, Ashley. *Quiet Those Quills*, Concept Art. 2023. Colored pencil on Bristol Board. 8.5 X 11 Spreads.

Description:

Quiet Those Quills is a children's book in development. Penelope the Porcupine's quills explode all over the playground after she experiences a string of annoyances. *Quiet Those Quills* emphasises the importance of transforming anger into creations of good rather than destruction.

Fig. 2b, Jones, Ashley. *Its Always Cloudy in Indianapolis*. 2023. Digital Art. 8.5 X 11 Spreads.

Description:

In 2011, Jones's elementary library had a picture book drawing contest. The imagination of Mo Willem's *Knuffle Bunny* filled her blank page. Although she was only awarded the participation prize, the competition lit a spark of interest in illustration.

Like Willems, *Its Always Cloudy in Indianapolis* combines illustrative work and photography. Instead of New York, *Its Always Cloudy* takes stage in the Hooiser state. Inspired by her ICAN service dog, Simon, Jones decided to write a childrens book about their shared ventures. Jones has goals of publishing *Its Always Cloudy in Indianapolis* in March 2024.

Fig. 2a, Jones, Ashley. *Quiet Those Quills*, Concept Art. 2023. Colored pencil on Bristol Board. 8.5 X 11 Spreads.



fig. 2a



ASHLEY JAMES

fig. 2a



fig. 2a



fig. 2a

Fig. 2b, Jones, Ashley. *Its Always Cloudy in Indianapolis*. 2023. Digital Art. 8.5 X 11 Spreads.

***Note: Pages 5, 10, 24-29 are still in development and are not included in this portfolio.**



fig. 2b



"Maybe they are missing behind thick blue clouds?"

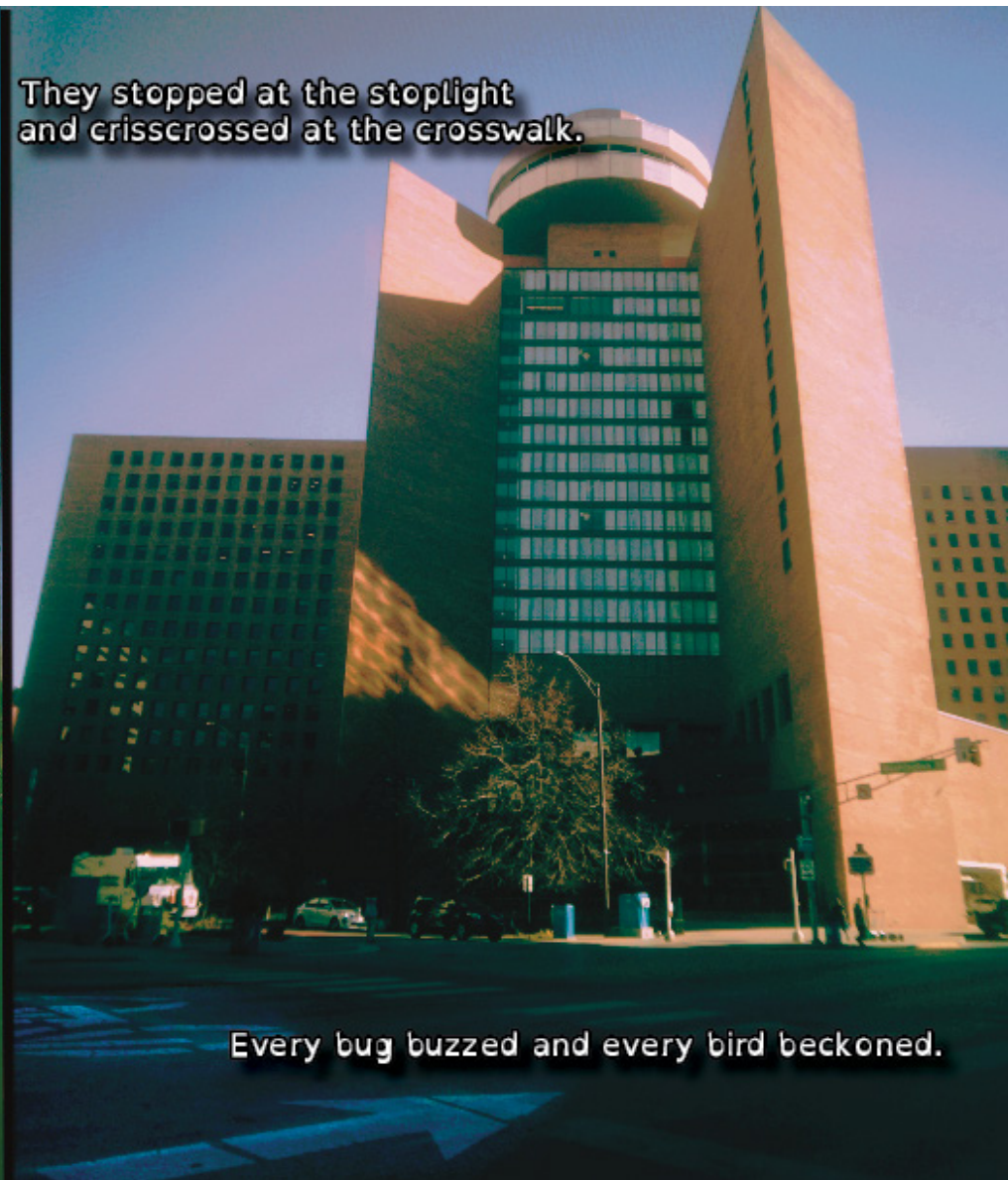
fig. 2b



fig. 2b



They stopped at the stoplight
and crisscrossed at the crosswalk.



Every bug buzzed and every bird beckoned.

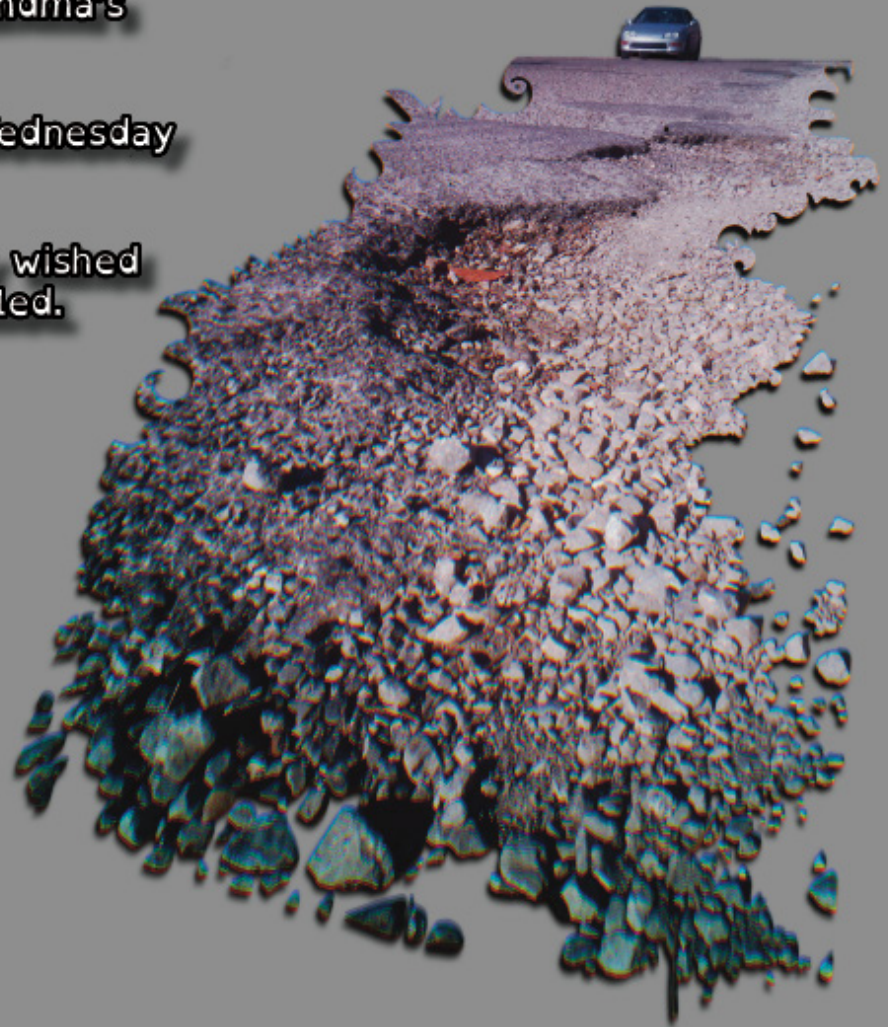
fig. 2b

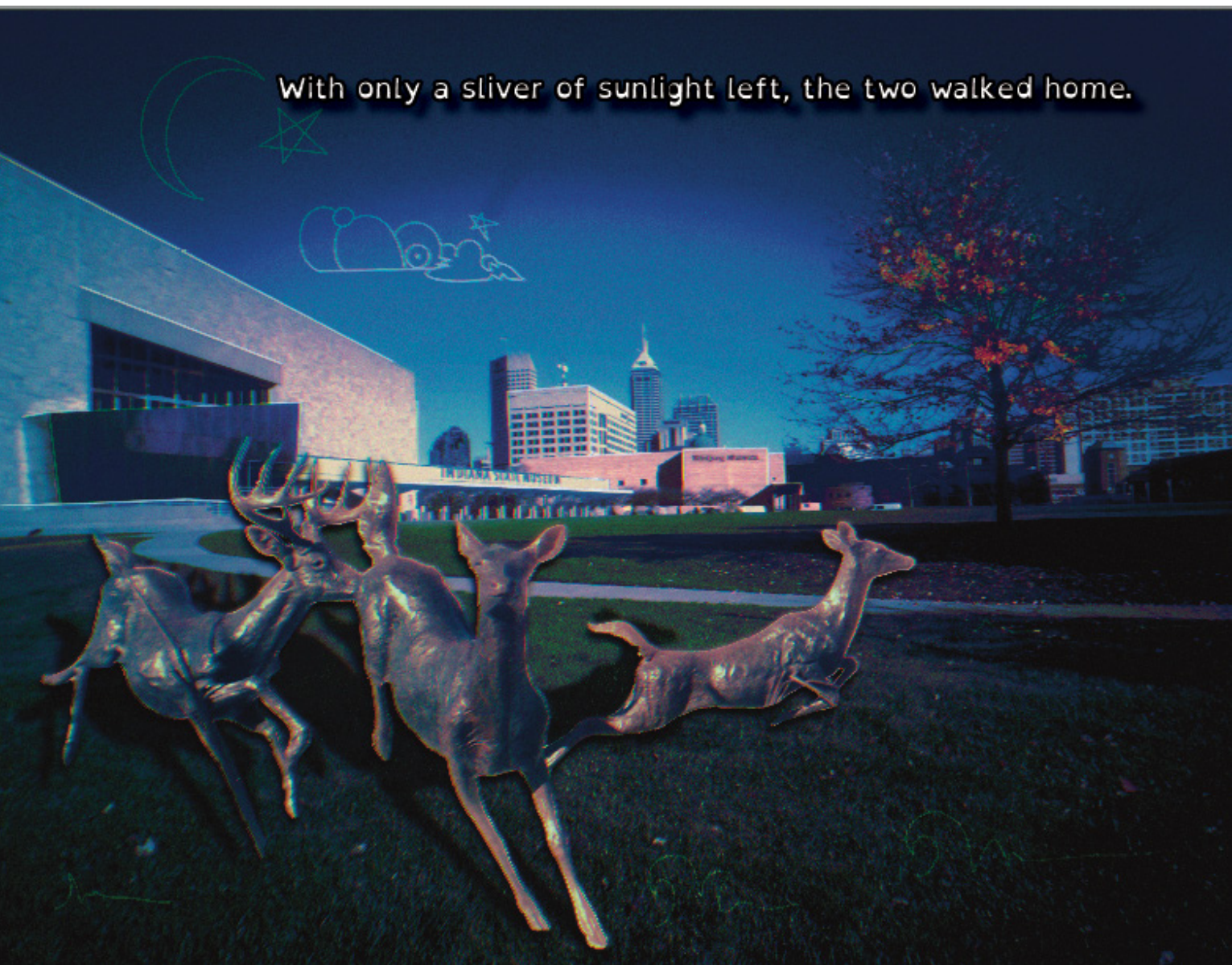


Mr. Potter wished for Grandma's famous stew.

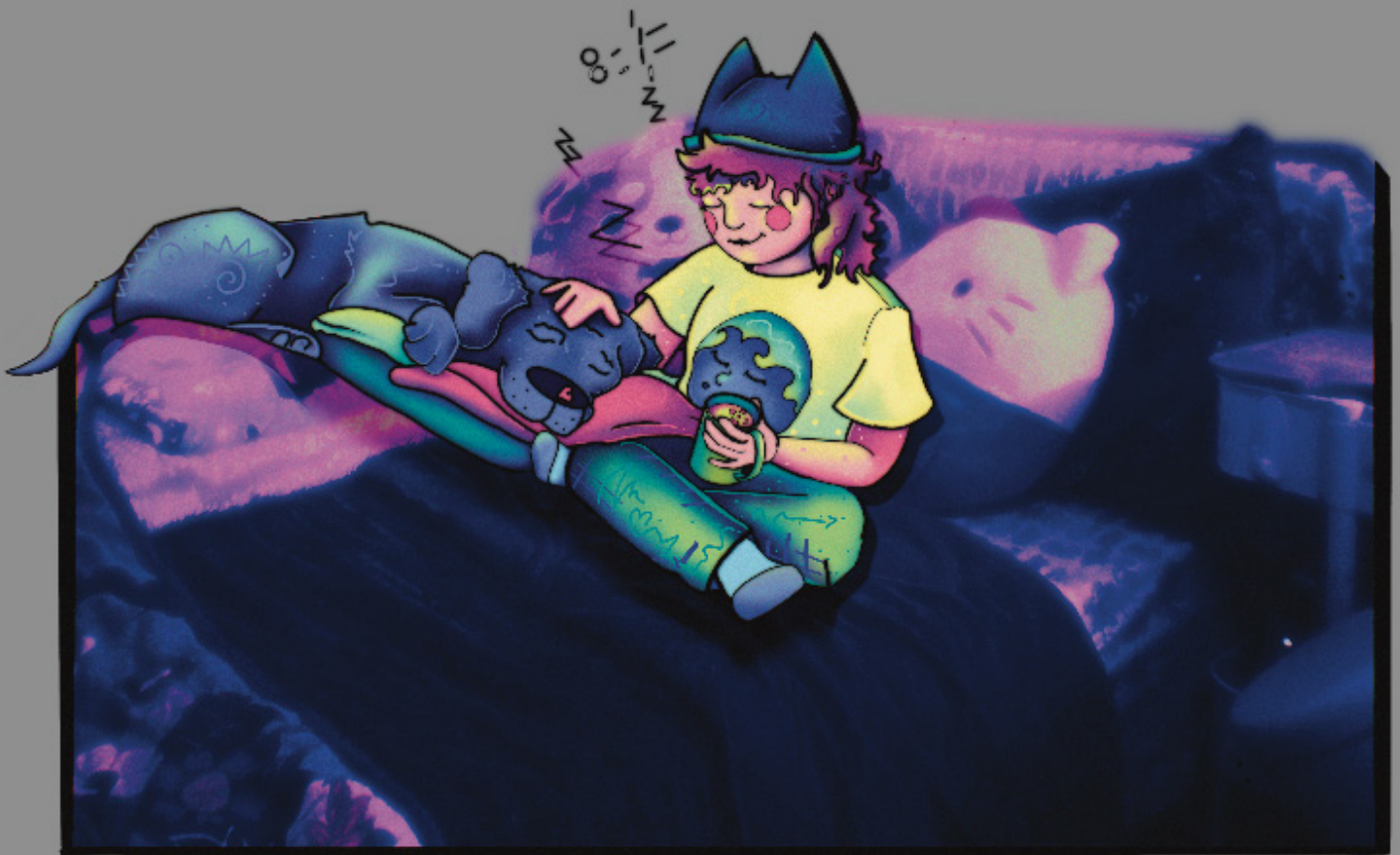
Ms. Wallace wished for Wednesday off.

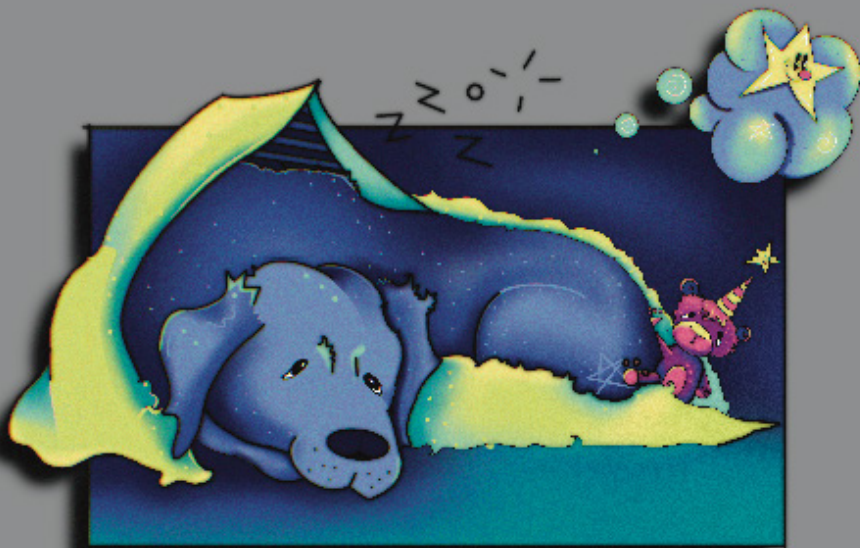
Of course, the Bus Driver wished for each pothole to be filled.





While cozied up with camomile tea in hand, they snoozed away to Sandman's slumber.





pg. 16



fig. 2b



Simon's sleep was filled with wishes. With weary eyes, Simon snuck his snout out from beneath the blanket. Down at the fountain filled with coins, Simon wished to save today.





Galaxies of shooting stars soared over circle city. One by one, each star landed on Earth to make everyone's wish come true. Simon sang his song, leading all the stars to everybody in town.



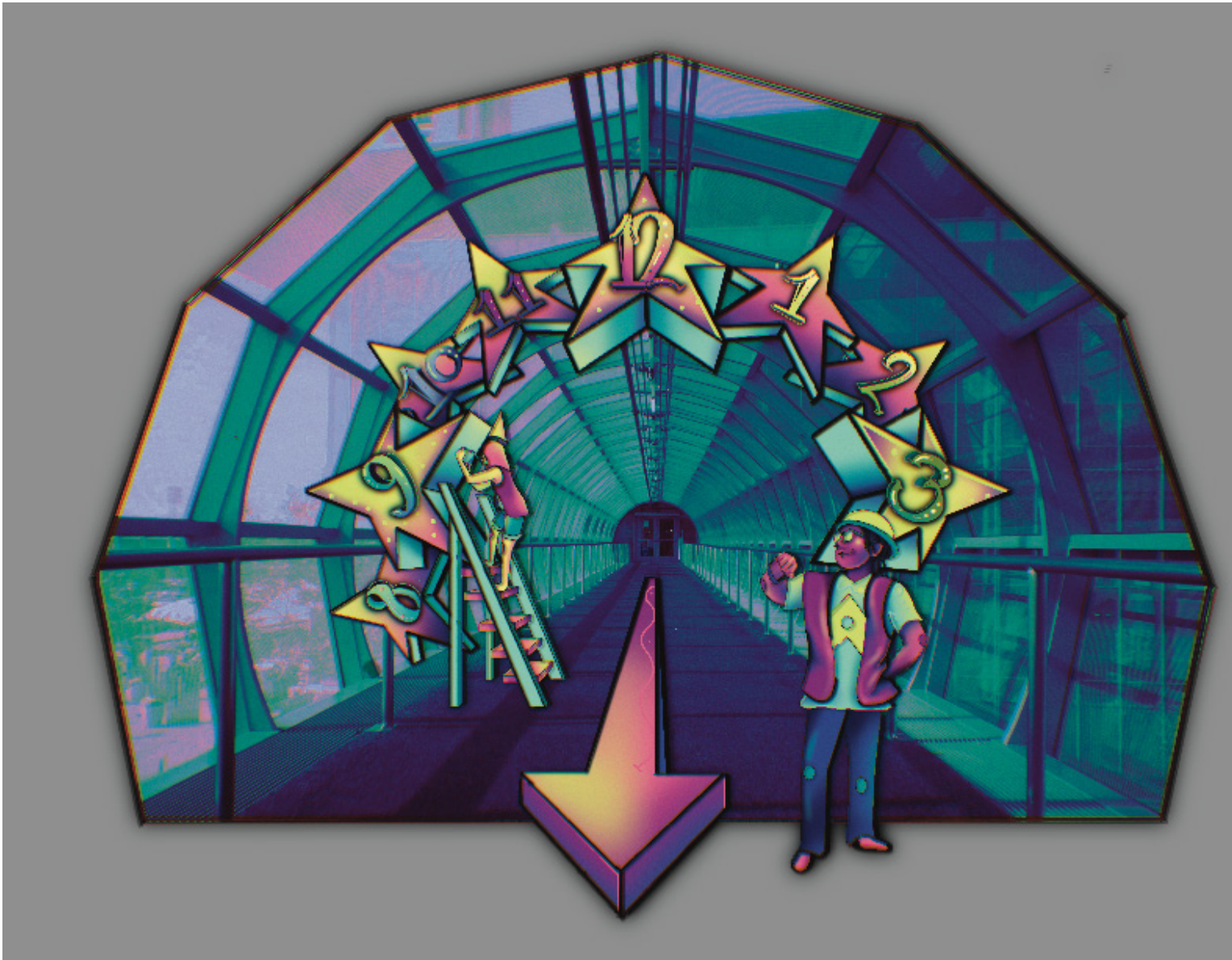


pg. 21

fig. 2b

In time for Wednesday, stars took over Ms. Wallace's Watch Emporium.
She spent her day off in the Nine Lives Cat Café.









"Today is Sunny," She sang.

While upside down, Simon slept all day.



Section 3: Fine Art

Contents:

Fig. 3a, Jones, Ashley. *Moldavite*. 2023. Gel pen. 11 in. x 14 in.

Fig. 3b, Jones, Ashley. *Chaos and Connection ft. Earth and Sun in Helix Orbit*. 2023. Mixed media. 18 in. x 24 in.

Fig. 3c, Jones, Ashley. *Love Your Neighbor*. 2023. Colored pencil on toned paper . 11 in. x 14 in.

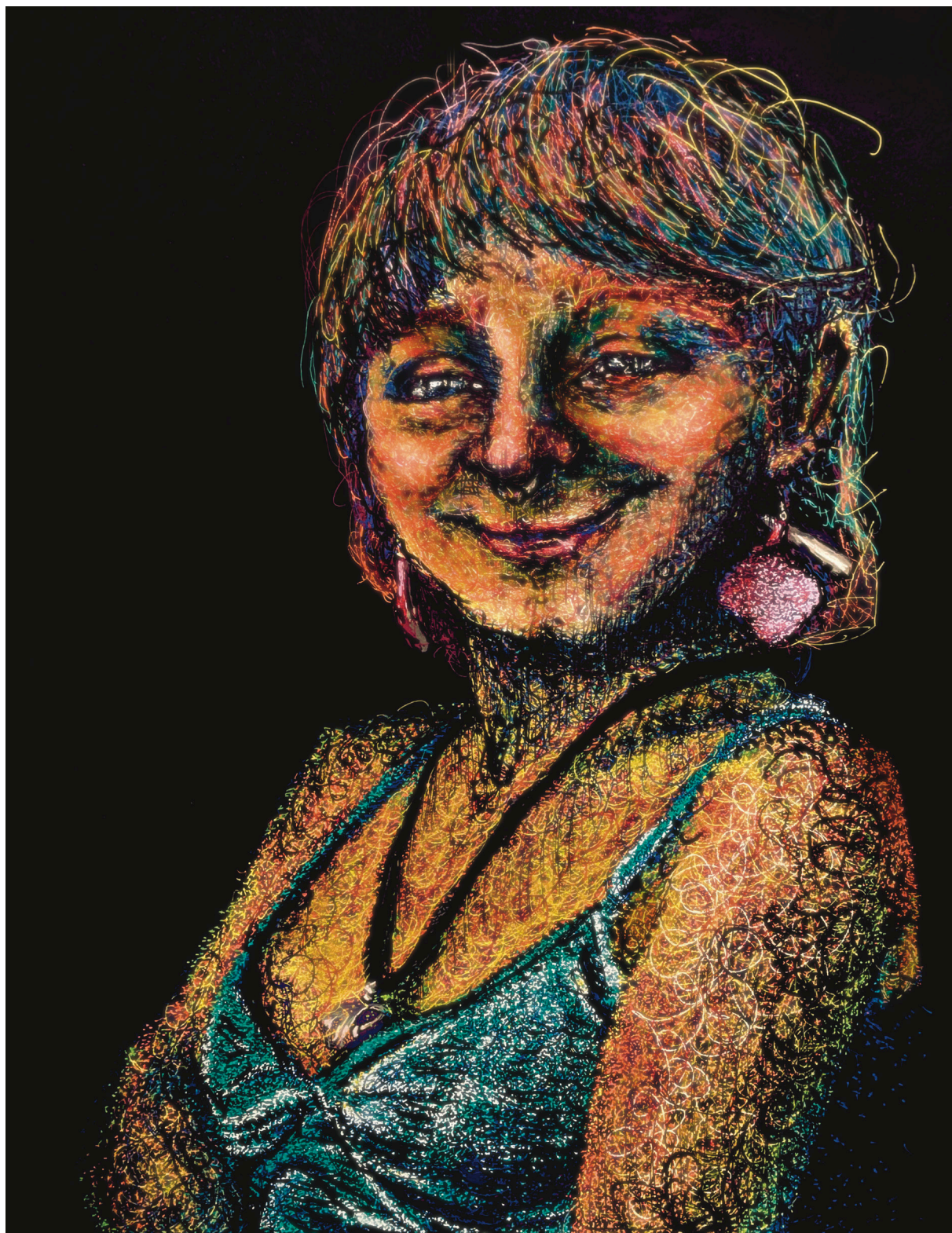


Fig. 3a, Jones, Ashley. Moldavite. 2023. Gel pen. 11 in. x 14 in.

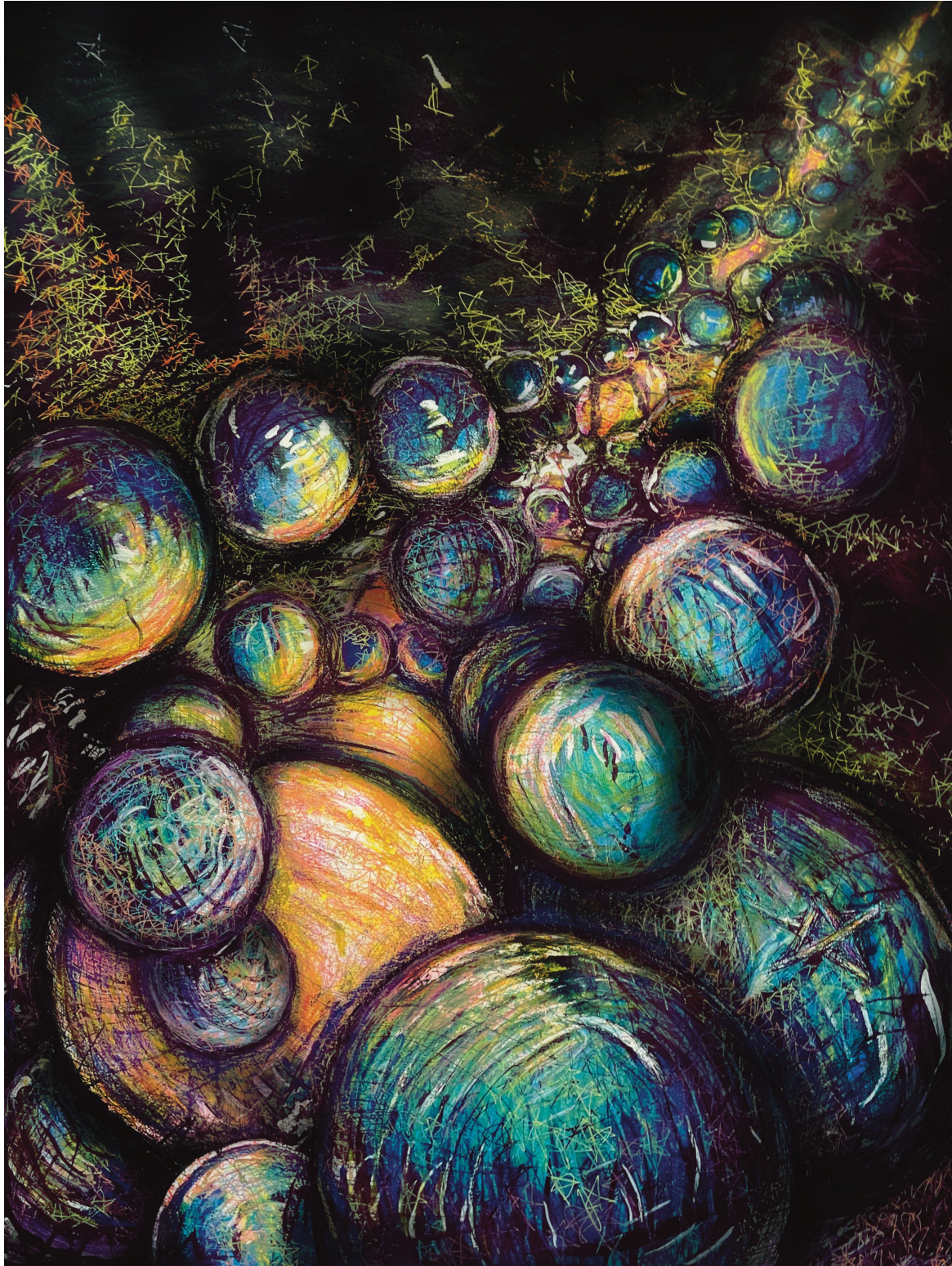
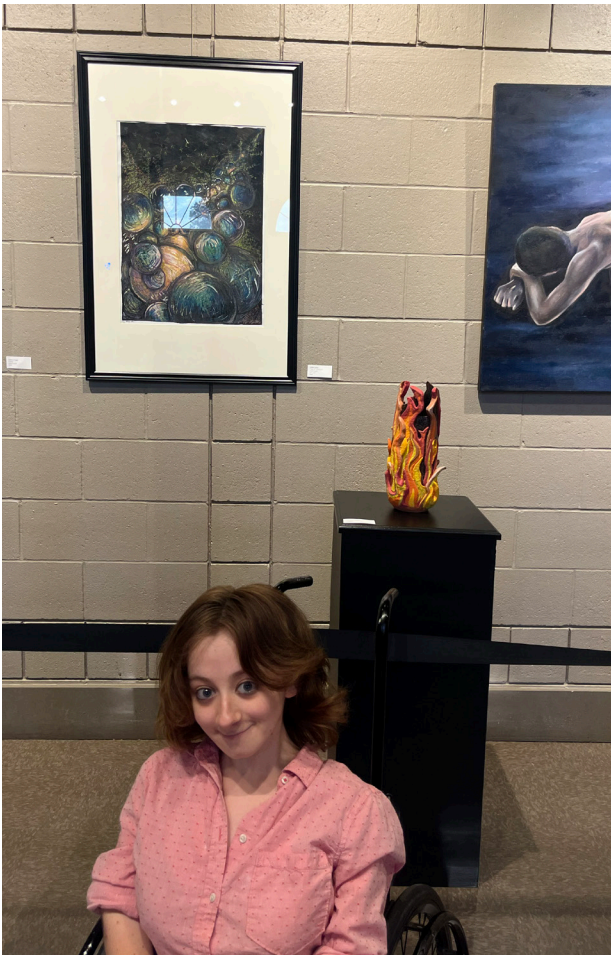


Fig. 3b, Jones, Ashley. *Chaos and Connection ft. Earth and Sun in Helix Orbit*. 2023. Mixed media. 18 in. x 24 in.



Artist Statement:

Chaos and Connection is a multi-media artwork created with watercolor, inks, colored pencils, and chalk pastels. Science and art are uniquely interwoven. While studying our solar system's movement, I became captivated by its "epicycle" and almost helical shape (PBS Digital Studios). **Chaos and Connection** captures time in a drawing as it features Earth's pull towards the Sun, and the Sun's gravitational pull towards our galaxy. Life's movement itself is chaotic, therefore we must embrace the connections it inherently creates.

-Ashley Jones



Fig. 3b at the Interstellar exhibition at Garfield Park.

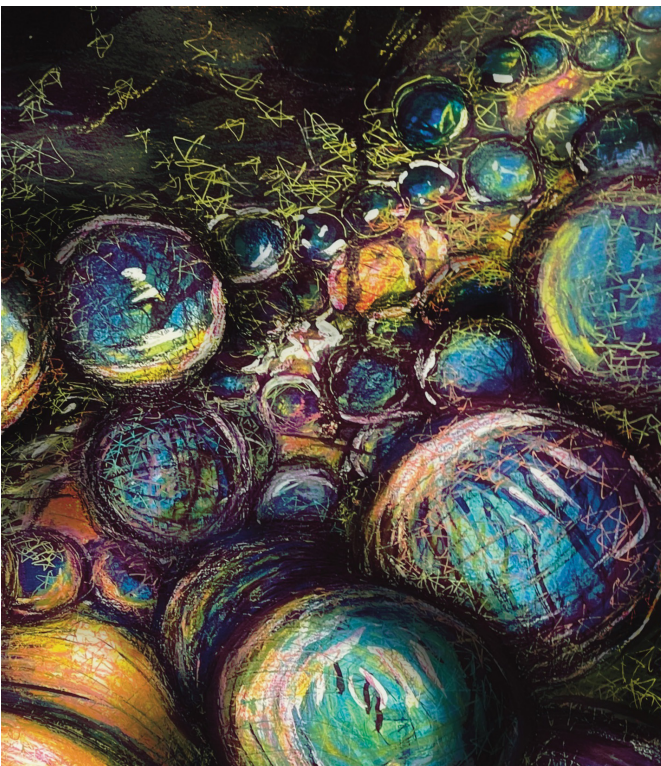




Fig. 3c, Jones, Ashley. Love Your Neighbor. 2023. Colored pencil on toned paper . 11 in. x 14 in.

